

ATOMRC

User Manual Three 蝙蝠



Three specifications/蝙蝠规格

Three specifications/蝙蝠规格	
Wingspan/翼展	860mm
Length/长度	385mm
Servo/舵机	9g Servo*2PCS
Material/材料	EPP
Recommend Motor/推荐电机	2207/2306.5 1950KV
Recommend ESC/推荐电调	BLS 4S30A ESC
Recommend Propeller/推荐螺旋桨	6042-2
Recommend take off weight/建议起飞重量	500g±100g
Recommned Battery/推荐电池	1300~1500mAh 4s

Packaging content/包装清单

Packaging content/包装清单
Wing(foam)/左右机翼(泡沫)
Fuselage(foam)/上下机身(泡沫)
Nose(foam)/机头盖(泡沫)
Wingtip(foam)/左右翼尖(泡沫)
Wing lower cover(foam)/左右机翼下盖(泡沫)
Programmable LED/可编程LED
Battery Strap/电池扎带
Sticker/飞机贴纸
Carbon Tube 510*6*6mm/空心方管 510*6*6mm
Carbon Tube 65*5mm/空心圆管 65*5mm
Screws M3*35mm/手拧螺丝 M3*35mm

KIT Installation /KIT 安装说明

1



安装电机、电机座、LED灯板、电调，注意安装的顺序。电调电源线和信号线建议裁剪到70mm-80mm

Install the motor, motor base, LED, esc, paying attention to the installation sequence. Power cable length suggest to 70mm-80mm.

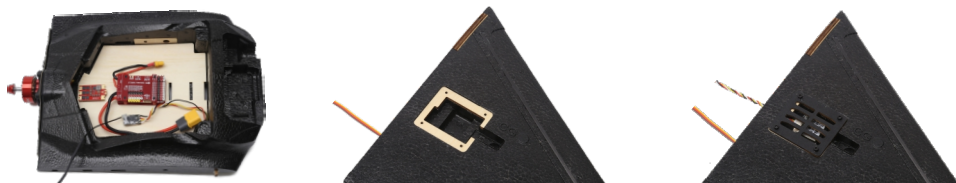
2



安装机翼舵机的拉杆

Install the servo rods.

3

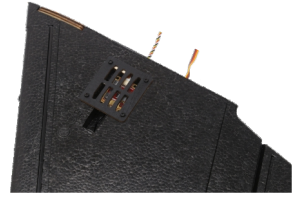


安装飞控/接收机/GPS

Install the FC/Receiver/GPS.

KIT Installation /KIT 安装说明

4



安装FPV设备
Install the FPV system.

5



安装机翼，舵机连接到接收机。
Install the wing, connect the servo to the receiver.

RTH Installation /RTH 安装说明

1

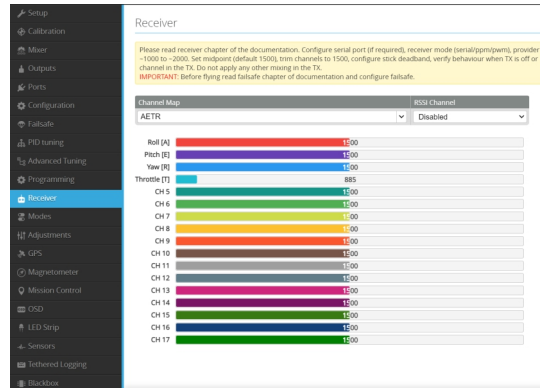
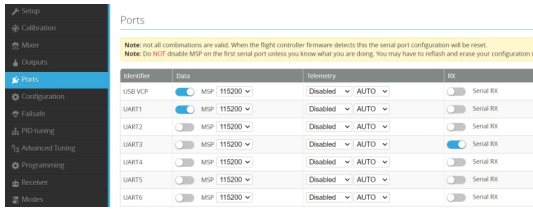


安装机翼，左机翼连接PWM3、右机翼连接到PWM4
Install the Wing, Left wing servo PWM3 Right wing servo PWM4.

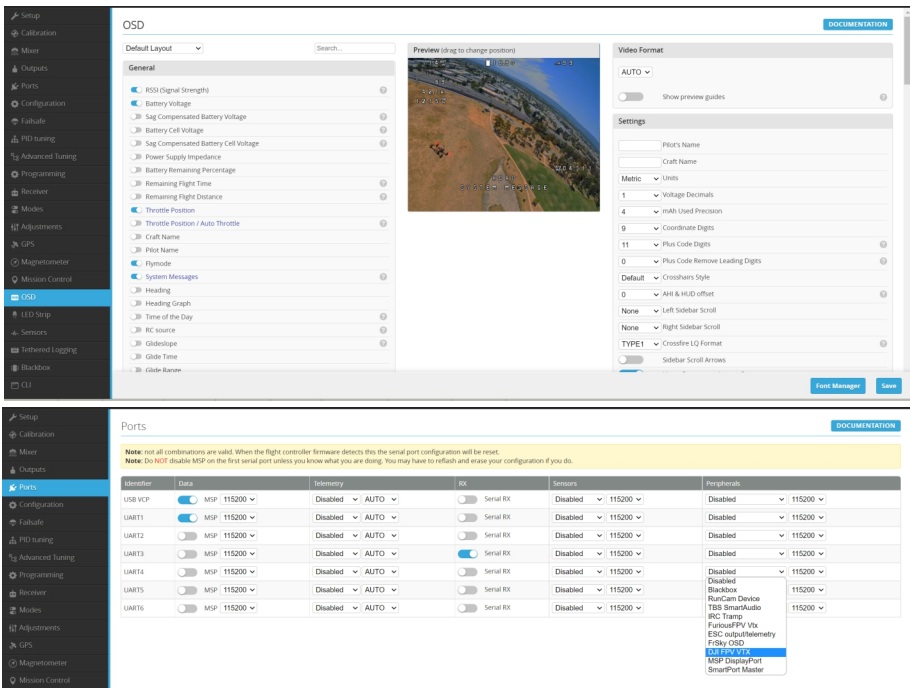
2



下载INAV地面站，安装接收机，连接地面站
Install the INAV configurator then plug to PC.



接收机安装:飞控默认认为CRSF协议, UART2,
如用Sbus或其他接收机,需修改UART2及接收机协议
Install the receiver:CRSF in on UART2 by default,
If using Sbus,please change the the UART2 and
receiver protocol.



安装FPV设备, 默认设置为模拟图传OSD设置
如使用数字图传, 需在INAV地面站进行改动
Install the FPV system,OSD:analog OSD by default,
If using digital vtx,user need change the settings on INAV configrator.

RTH Installation /RTH 安装说明

5

Modes

Use ranges to define the switches on your transmitter and corresponding mode assignments. A receiver channel that gives a reading between a range min/max will activate the mode. Remember to save your settings using the Save button.

Hide unused modes

Arming

ARM CH 5
Min: 1700 Max: 2100
Add Range

PREARM
Add Range

Flight Modes

MANUAL CH 6
Min: 1700 Max: 2100
Add Range

Mixer

Platform configuration
Airplane Platform type
AUTO Output mode

Mixer preset
Flying Wing
Load and apply Load mixer Refresh mixer

Output Mapping

Output	S1	S2	S3	S4	S5	S6	S7	S8
Function	Motor 1	-	Servo 1	Servo 2	-	-	-	-

Motor Mixer

Motor	Throttle [T]	Roll [A]	Pitch [E]	Yaw [R]
1	1	0	0	0

Servo mixer

Servo	Input	Weight (%)	Speed (10µs/1)	Active
1	Roll [A]	40	1	Enabled

Receiver Mode

SERIAL Receiver type

Note: Remember to configure a Serial Port (via Ports tab) for the serial receiver

CRSF Serial Receiver Provider

OFF Serial Port Inverted (comparing to protocol default)

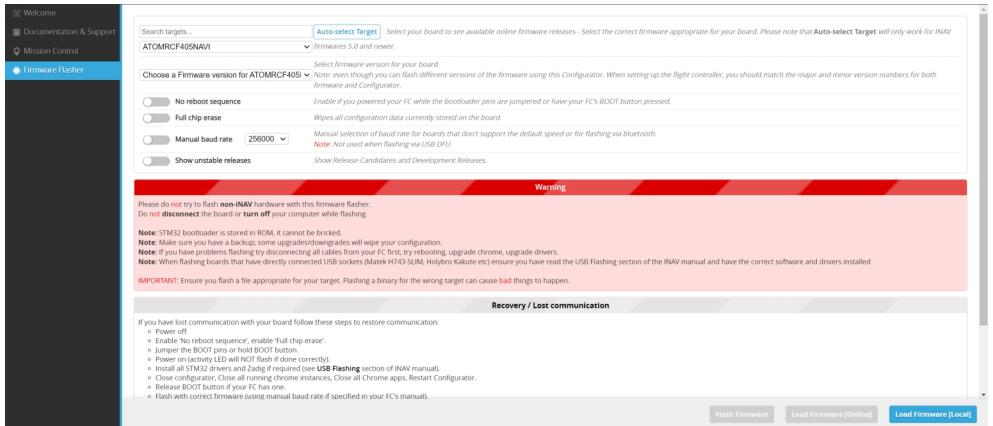
AUTO Serial receiver half-duplex

检查接收机类型及协议
检查模式开关行程设置、检查舵机输出是否正确

Check INAV Configurator the receiver type, Then assign the channel and mode.

RTH Installation / RTH 安装说明

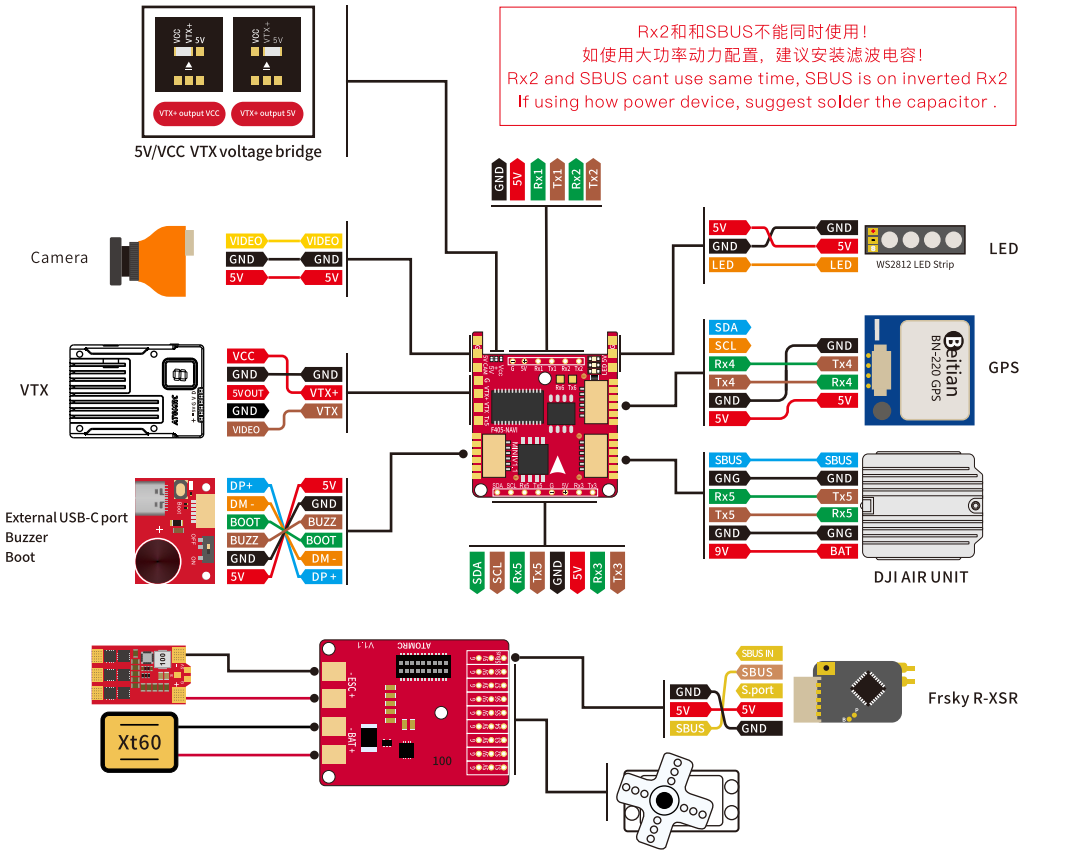
6



最新CLI配置文件，请到官网下载

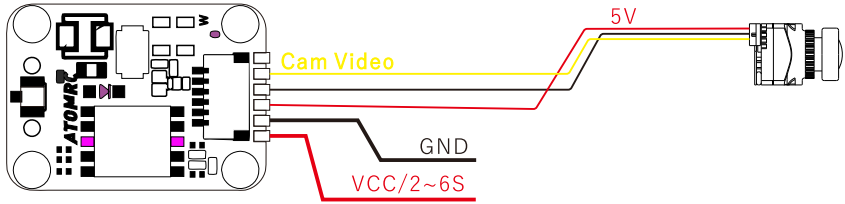
请先确认飞控固件版本与CLI一致后，先恢复默认，再导入CLI配置Latest cli settings, please go to download page of www.atomrc.com make sure firmware version is matched with the cli settings, reset the flightcontroller first, then load the cli settings.

ATOMRC F405 NAVI MINI/飞控接线图



ATOMRC F405 NAVI MINI			
飞控芯片/MCU	STM32F405RGT6	外置USB转接板 External USB-C port	Buzzer/BOOT/Type C
陀螺仪/IMU	BMI270	LED	Ws2812 LED Strip
BEC Out put	5V/3A ; VCC	飞控固件/Firmware	ArduPilot: ATIMRCF405NAVI
Flash	16Mbyte		INAV:ATOMRCF405NAVI
OSD	AT7456E	电流计/Ammeter	90A
PWM Out put	PWM*8	电压输入范围/Voltage Input	3~6S Lipo
串口/Uart	Uarts*6	电流校准值: 电流计比例	257
气压计/Barometer	SPL06-001	电流校准值: 偏移量	20
重量/Weight	10g	尺寸/Size	35mmX27mmX12mm

ATOMRCTx800 VTX WiringDiagram/TX800图传接线图



VTX Setting/图传设置

1. Hold button 3 seconds into setting mode.
 2. In setting mode, short press the button to change band.
 3. Then hold button 3 seconds into CH setting mode, short press button to change CH.
 4. Hold button 3 second to get into Power setting mode, there is short bar on LED, short press to switch power, 1 bar means 25mW, 2 bar means 200mW, 3 bar means 500mW.
1. 长按设置按键三秒，进入波段设置模式。
 2. 在设置模式下，短按按键切换波段。
 3. 再次长按按键三秒钟，进入频道切换模式，短按按键切换频道。
 4. 再次长按按键三秒钟，进入切换功率模式，短按按键切换功率，数码管一条为100mw，两条为400mw，三条为800mw。

Band	Channel							
	1	2	3	4	5	6	7	8
Band A	5865	5845	5825	5805	5785	5765	5745	5725
Band B	5733	5752	5771	5790	5809	5828	5847	5866
Band E	5705	5685	5665	5645	5885	5905	5925	5945
Airwave/FS	5740	5760	5780	5800	5820	5840	5860	5880
Race Band	5658	5695	5732	5769	5806	5843	5880	5917
L Band	5362	5399	5436	5473	5510	5547	5584	5621

Voltage input/电压输入范围: 2~6S Lipo Power/功率: 100/200/800mw Switchable

Power consumption/功耗: 9V 1.1A Frequency/频率: 5.3~5.9Ghz

ESC Information/电调说明

Throttle calibration /电调油门校准

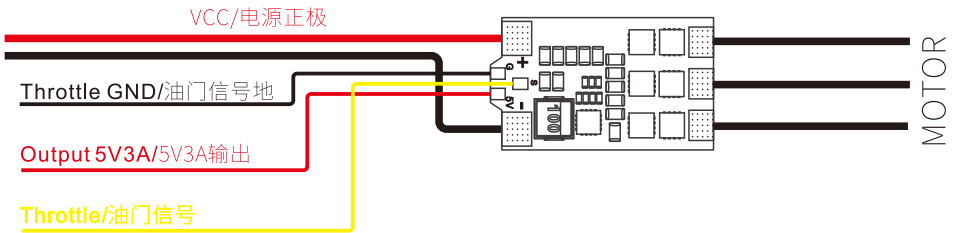
1.The ESC included with the model has a safe start.If the motor battery is connected to the ESC and the throttle stick is not in the low throttle or off position,the motor will not start until the throttle stick is moved to the low throttle or off position.

2.Power on the ESC(The ESC must connect to the motor and Receiver). The motor will emit a series of beeps, after the beeps, set the the throttle stick the the minimum, the motor will emit a series beep again. now the ESC calibration is done.

1.电调具有安全启动保护功能,当电机、电池连接电调后,电调信号未处于最低位置,电调油门输出不会启动。

2.电调油门校准:请先拆卸螺旋桨,将油门摇杆移动到最高位置后通电,当哔哔声结束后,迅速将油门摇杆移动到最低位置,哔哔声音结束,油门校准成功。

ATOMRC BLS 4S30A ESC Wiring Diagram



Voltage input/电压输入范围: 2~4S Lipo

Max Current/最大电流: 35A

Output/输出: Built in 5V 3A BEC/内置5V 3A BEC

Size/尺寸: 29.5*17.5mm

Please download the latest user manual at www.atomrc.com

